

C50R 120 VAC

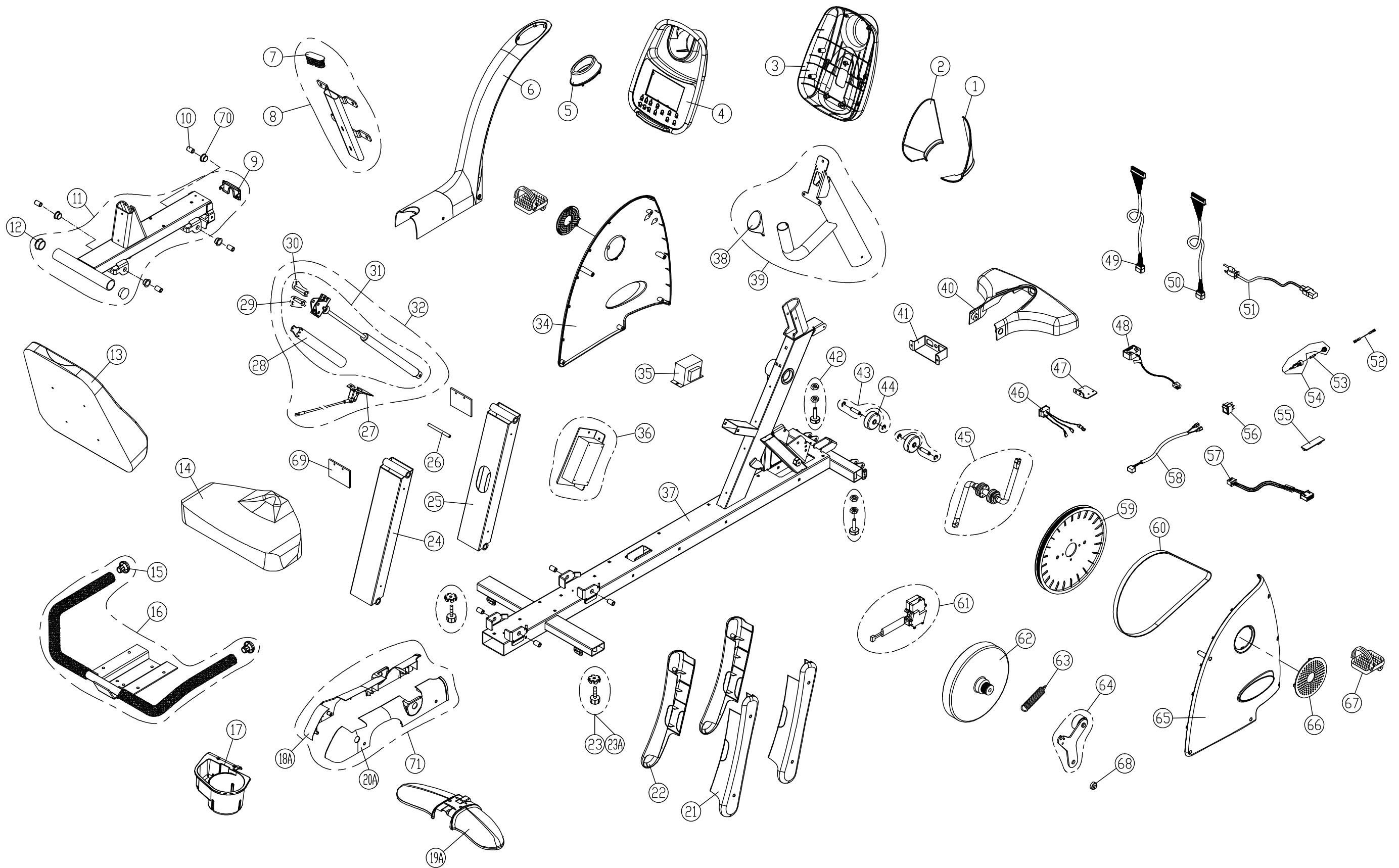
1/7/2011

BBL	DESCRIPTION	QTY	PART #
1	DISPLAY RIGHT LOWER COVER	1	C50R-01
2	DISPLAY LEFT LOWER COVER	1	C50R-02
3	DISPLAY BACK COVER	1	E80-06
4	DISPLAY	1	C50R-04
5	PEDESTAL COLLAR	1	C50R-05
6	UPPER COVER	1	C50R-06
7	SEAT BACK FRAME CAP	1	C50R-07
8	SEAT BACK FRAME+CAP	1	C50R-08
9	SEAT UNDER CARRIAGE END CAP	1	C50R-09
10	SEAT AXLE BUSHING	8	C50R-10
11	SEAT CARRIAGE	1	C50R-11
12	TRANSPORT HANDLE CAP	2	C51R-19
13	SEAT BACK	1	C50R-13
14	SEAT BOTTOM	1	C50R-14
15	HANDLEBAR END CAP	2	1200-64
16	HANDLEBAR	1	C50R-16
17	CUP HOLDER	1	C50R-17
18A	LEFT HORIZONTAL COVER	1	C50R-18
19A	REAR LEG COVER	1	C50R-19
20A	RIGHT HORIZONTAL COVER	1	C50R-20
21	RIGHT SEAT SUPPORT COVER	2	C50R-21
22	LEFT SEAT SUPPORT COVER	2	C50R-22
23A	REAR LEVELER	2	C50R-23
24	SEAT SUPPORT - REAR	1	C50R-24
25	SEAT SUPPORT - FRONT	1	C50R-25
26	PIN	1	C50R-26
27	GAS SPRING CABLE GUIDE	1	C50R-27
28	GAS SPRING COVER	1	C50R-28
29	GAS SPRING SET PIN	1	C52R-31
30	GAS SPRING BRACKET PIN	1	C52R-30
31	GAS SPRING+PINS+COVER	1	C50R-31
32	GAS SPRING+PIN+COVER+GUIDE	1	C50R-32
34	LEFT SIDE COVER	1	C50R-34
35	TRANSFORMER-110V	1	C51U-37
36	DRIVE BOARD	1	C51U-13
37	NOT AVAILABLE - FRAME	1	C50R-37
38	HANDLEBAR GRIP CAP	1	C51R-07
39	PEDESTAL	1	C50R-39
40	FRONT LEG COVER	1	C50R-40
41	ON/OFF SWITCH BRACKET	1	C50R-41

BBL	DESCRIPTION	QTY	PART #
42	LEVELER	2	570U-69
43	TRANSPORT WHEEL AXLE	2	TR21-81
44	TRANSPORT WHEEL	2	TR21-82
45	SPINDLE/CRANK SET	1	C50R-45
46	POWER CORD BRACKET	1	E80-26
47	REED SWITCH BRACKET	1	C50R-47
48	REED SWITCH	1	C51U-18
49	CABLE - DRIVE BOARD TO LOWER PEDESTAL	1	C50R-49
50	CABLE - LOWER PEDESTAL TO DISPLAY	1	C50R-50
51	POWER CORD - UL	1	C51U-35
52	CABLE - ON/OFF SWITCH TO FUSE HOLDER	1	C580R-27
53	FUSE - FAST 0.5A 6*30	2	F05T-01
54	FUSE HOLDER	1	FSHR-01
55	TELEMETRY RECEIVER BRD W/ CABLE	1	C570R-139
56	ON/OFF SWITCH	1	ONSW-01
57	WIRE, HR RECEIVER TO DISPLAY	1	C50R-57
58	CABLE - ON/OFF SWITCH TO DRIVE BRD	1	C50R-58
59	DRIVE PULLEY	1	5006-15
*	MAGNET FOR REED SWITCH	2	5006-14
60	DRIVE PULLEY BELT 460J6	1	C51U-46
61	RESISTANCE VR MOTOR	1	506P-26
62	FLYWHEEL	1	C51U-47
63	IDLER PULLEY SPRING	1	C51U-12
64	IDLER PULLEY	1	C50R-64
65	RIGHT SIDE COVER	1	C50R-65
66	SPINDLE COVER	2	C51U-26
67	LEFT / RIGHT PEDAL SET	1	C50R-67
*	STRAPS, BIKE PEDAL PAIR	1	5002-16A
68	DRIVE PULLEY BUSHING	1	C50R-68
69	CLEAR PVC PAD	2	C50R-69
70	SELF-LUBRICATING BEARING	1	000-004-481
71	HORIZONTAL COVER SET	1	153-991-110

ADDITIONAL PARTS NOT SHOWN

*	DISPLAY OVERLAY	1	C50R-70
*	HEART RATE STRAP	1	3100-03A
*	OWNER'S MANUAL	1	C50R-OM
*	POLAR HEART RATE SIMULATOR	1	POLAR-01
*	E-PROM C50R/U	1	C50-EP



CHANGE DATE	CHANGE DESCRIPTION	CHANGE NO.	NAME		DRAWN BY	UNITS	MM	SALES BLOW UP DIAGRAM	DIAGRAM NO.	CAH-F002A-B
					VERIFIED BY	QTY	1			C50R
						VERSION	B1		MODEL	
						RATIO	1:12			